



**TEST REPORT**

NUMBER : TWNH00011461

APPLICANT: GEOVISION INC.  
9F, NO. 246, SEC. 1, NEIHU RD.,  
NEIHU DISTRICT, TAIPEI CITY,  
TAIWAN, R.O.C.

DATE : OCT 22, 2008

**SAMPLE DESCRIPTION:**

ONE (1) UNIT OF SUBMITTED SAMPLE SAID TO BE :  
ITEM NAME : COMPACTDVR V2  
ITEM NO. : GVLX4C2  
QUANTITY : 1 UNIT  
DATE SAMPLE RECEIVED : OCT 17, 2008  
DATE TEST STARTED : OCT 20, 2008

\*\*\*\*\*

**TESTS CONDUCTED:**

AS REQUESTED BY THE APPLICANT, FOR DETAILS PLEASE REFER TO ATTACHED PAGES.

\*\*\*\*\*

**CONCLUSION:**

<u>TEST SAMPLE</u>	<u>STANDARD</u>	<u>RESULT</u>
SUBMITTED SAMPLE	MECHANICAL SHOCK TEST — WITH REFERENCE TO IEC 60068-2-27 TEST Ea	SEE TEST CONDUCTED

\*\*\*\*\*

AUTHORIZED BY:  
ON BEHALF OF INTERTEK TESTING SERVICES  
TAIWAN LIMITED



PAUL YU  
DIRECTOR

TEST CONDUCTED

**MECHANICAL SHOCK TEST**

**TEST EQUIPMENT:**

EQUIPMENT : VIBRATION SHAKER  
MANUFACTURER : SHINKEN  
MODEL NUMBER : G9235  
DATE OF CALIBRATION : NOV. 12, 2007

**LABORATORY AMBIANCE CONDITION:**

TEMPERATURE : 15 ~ 25 °C  
HUMIDITY : 20 ~ 80 %RH

**REFERENCE DOCUMENT:**

THE TEST WAS PERFORMED WITH REFERENCE TO IEC60068-2-27 TEST Ea.

**PERIPHERAL SETUP DIAGRAM:**

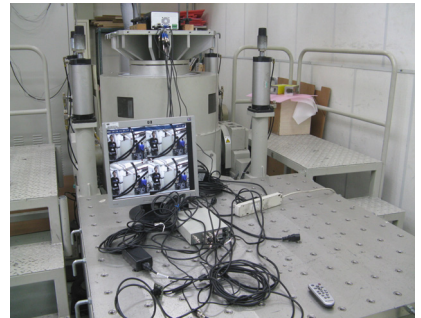
- SAMPLE SIZE: 1 UNIT
- SETUP PHOTO:



X AXIS



Y AXIS



Z AXIS

\*\*\*\*\*



NUMBER: TWNH00011461

TEST CONDUCTED

**MECHANICAL SHOCK TEST**

**TEST CONDITION:**

- OPERATING: INPUT ELECTRICAL POWER TO OPERATE DURING THE TEST.
- PULSE SHAPE: HALF-SINE WAVE
- ACCELERATION: 10 G
- PULSE DURATION: 2 ms
- TEST DETAILS:

TEST FACE	SHOCK TIMES
+X AXIS	3
-X AXIS	3
+Y AXIS	3
-Y AXIS	3
+Z AXIS	3
-Z AXIS	3

**TEST PROCEDURE:**

- CHECK THE SAMPLE'S APPEARANCE BEFORE THE TEST.
- INSTALL THE SAMPLE ON THE TESTING TABLE AND SET UP TESTING CONDITION.
- AFTER TESTING, TAKE OFF SAMPLE FROM TABLE PUTTING IN THE STORAGE AREA.
- OBSERVE THE SAMPLE AND RECORD FOR ANY VISIBLE CHANGE AFTER TESTING.

**SUMMARY:**

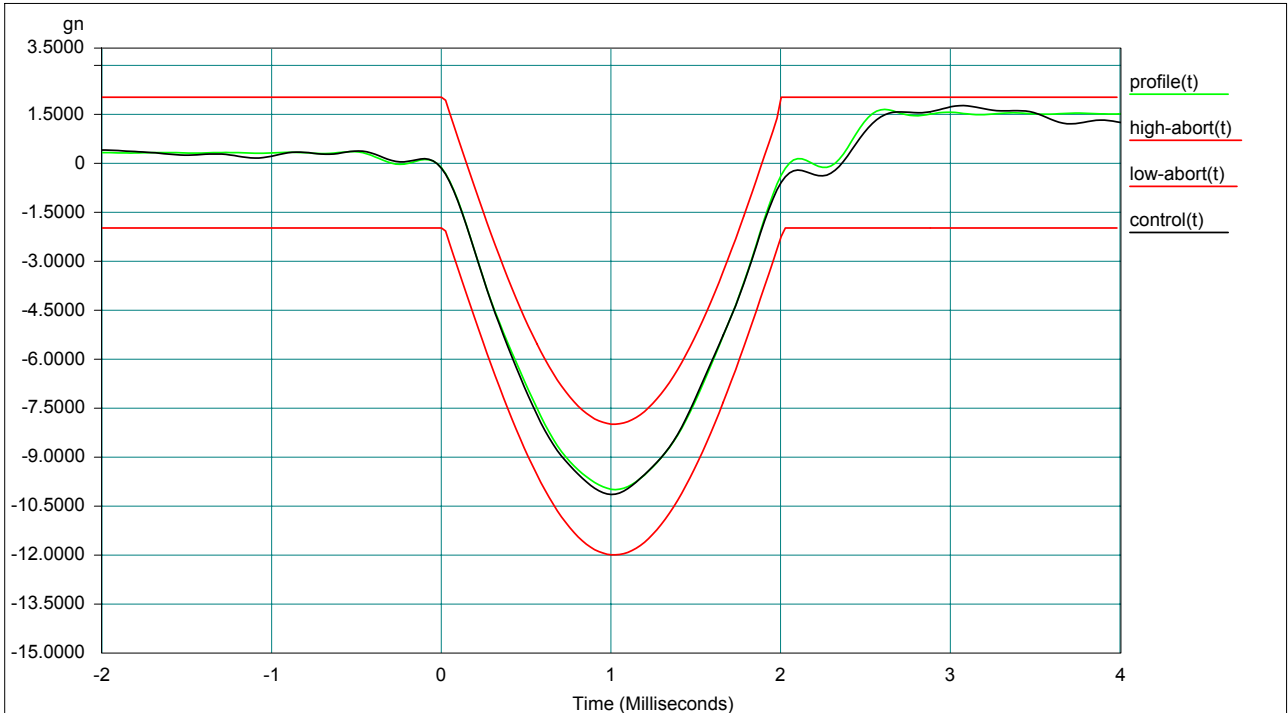
- NO VISIBLE DAMAGE WAS FOUND AFTER THE TEST.
- FUNCTIONAL ELECTRICAL CHECK IS CONDUCTED BY THE APPLICANT PER APPLICANT'S REQUEST.

\*\*\*\*\*

TEST CONDUCTED

**MECHANICAL SHOCK TEST**

-TEST PROFILE:  
+X AXIS



Level:100 %	Block Size:4096
Elapsed Pulses:13	Frame Time:0.100000 Seconds
Control Peak:10.151877 gn	Control RMS:1.124839 gn
Full Level Elapsed Pulses:3	dT:0.000024 Seconds
Demand Peak:10.000000 gn	Demand RMS:1.105759 gn
Remaining Pulses:0	Pulse Type: Half Sine
Amplitude: 10.000000 gn	
Data saved at 02:39:31 PM, Monday, October 20, 2008	
Report created at 02:39:32 PM, Monday, October 20, 2008	

\*\*\*\*\*

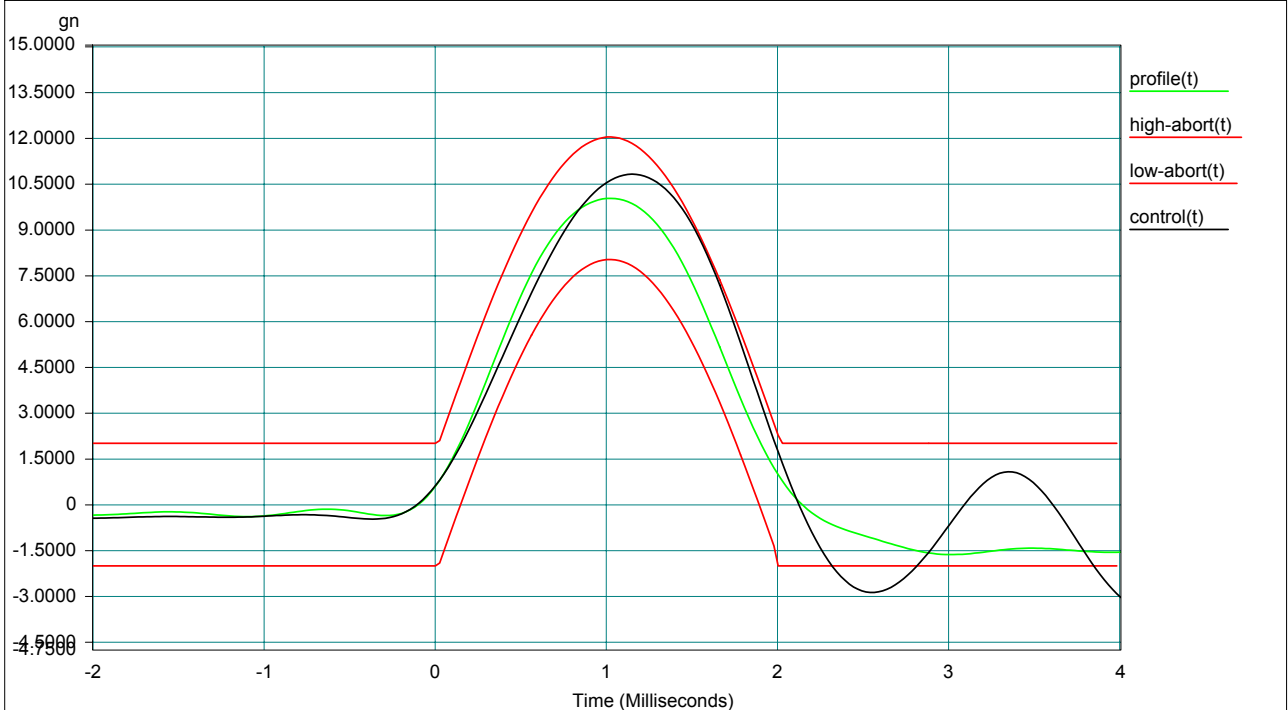


NUMBER: TWNH00011461

TEST CONDUCTED

**MECHANICAL SHOCK TEST**

-TEST PROFILE:  
-X AXIS



```

Level:100 %                               Block Size:4096
Elapsed Pulses:13                          Frame Time:0.100000 Seconds
Control Peak:10.830469 gn                  Control RMS:1.255252 gn
Full Level Elapsed Pulses:3                dT:0.000024 Seconds
Demand Peak:10.000000 gn                   Demand RMS:1.108230 gn
Remaining Pulses:0                         Pulse Type: Half Sine
Amplitude:10.000000 gn
Data saved at 03:00:27 PM, Monday, October 20, 2008
Report created at 03:00:27 PM, Monday, October 20, 2008

```

\*\*\*\*\*

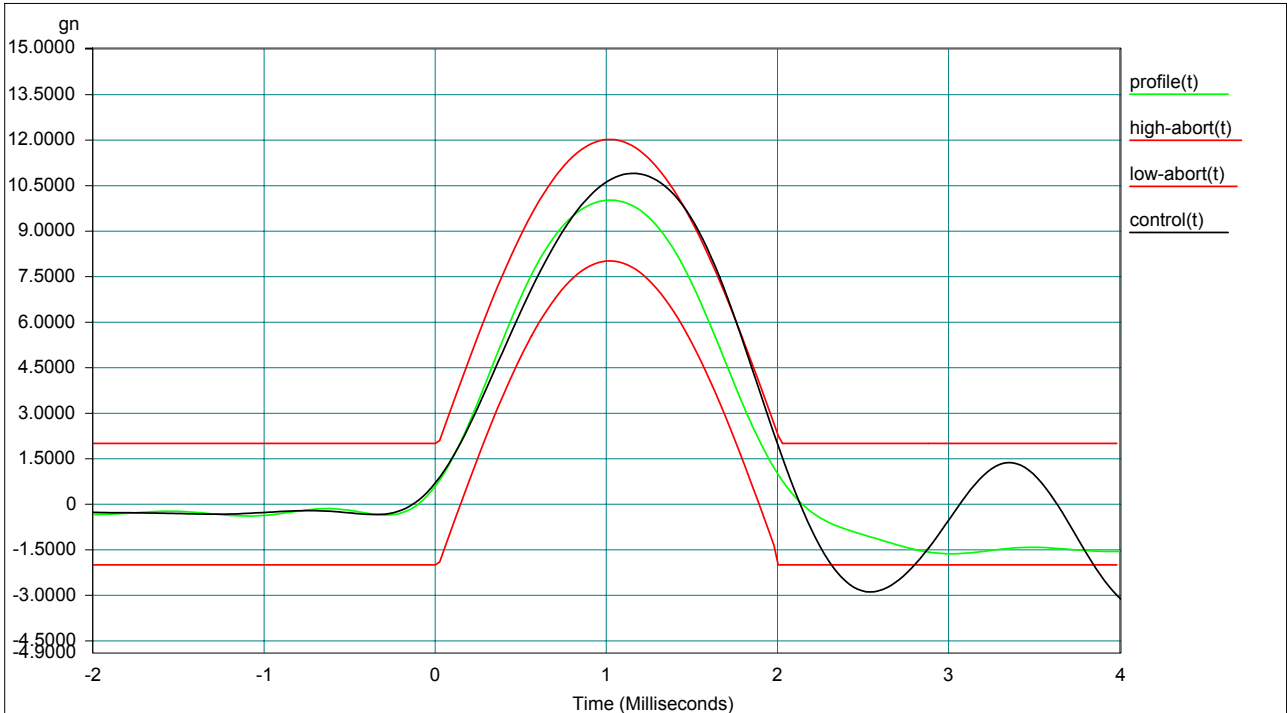


NUMBER: TWNH00011461

TEST CONDUCTED

**MECHANICAL SHOCK TEST**

-TEST PROFILE:  
+Y AXIS



Level:100 %                      Block Size:4096  
Elapsed Pulses:13                  Frame Time:0.100000 Seconds  
Control Peak:10.876258 gn        Control RMS:1.272013 gn  
Full Level Elapsed Pulses:3      dT:0.000024 Seconds  
Demand Peak:10.000000 gn        Demand RMS:1.108230 gn  
Remaining Pulses:0                Pulse Type: Half Sine  
Amplitude:10.000000 gn  
Data saved at 03:04:09 PM, Monday, October 20, 2008  
Report created at 03:04:09 PM, Monday, October 20, 2008

\*\*\*\*\*

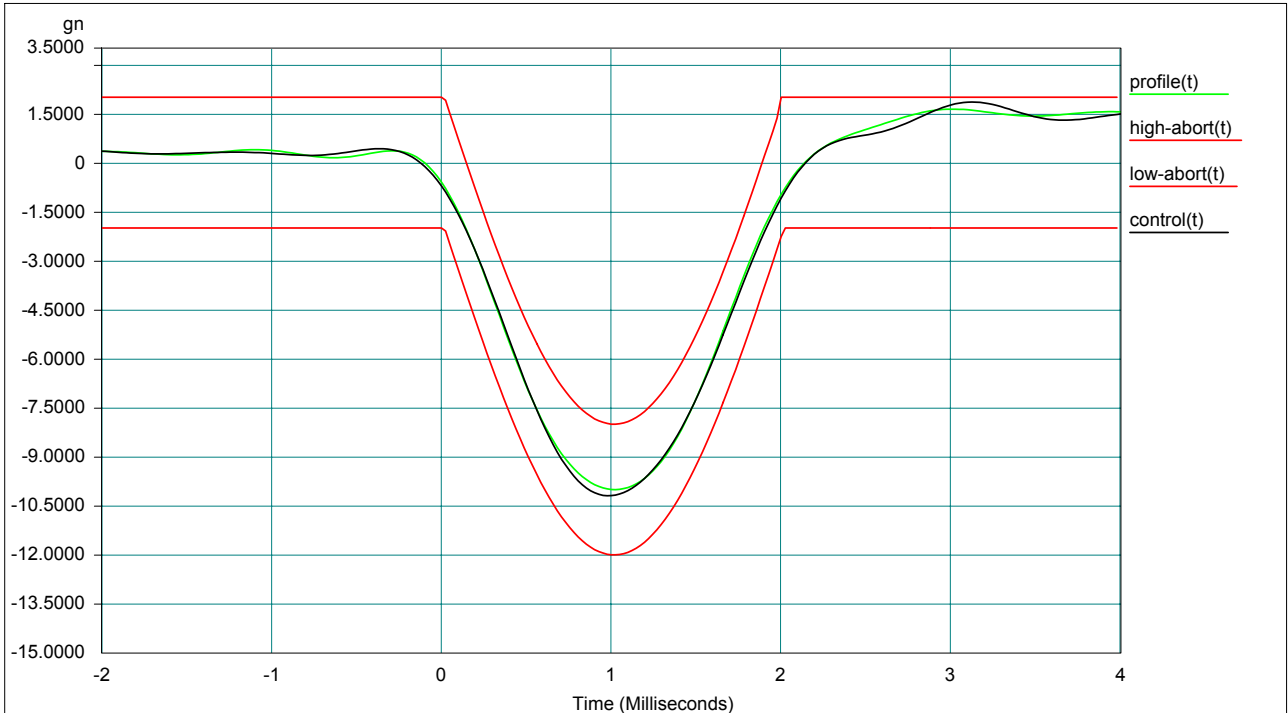


NUMBER: TWNH00011461

TEST CONDUCTED

**MECHANICAL SHOCK TEST**

-TEST PROFILE:  
-Y AXIS



```
Level:100 %          Block Size:4096
Elapsed Pulses:13      Frame Time:0.100000 Seconds
Control Peak:10.189725 gn   Control RMS:1.127190 gn
Full Level Elapsed Pulses:3  dT:0.000024 Seconds
Demand Peak:10.000000 gn   Demand RMS:1.108230 gn
Remaining Pulses:0       Pulse Type: Half Sine
Amplitude: 10.000000 gn
```

```
Data saved at 03:05:16 PM, Monday, October 20, 2008
Report created at 03:05:17 PM, Monday, October 20, 2008
```

\*\*\*\*\*

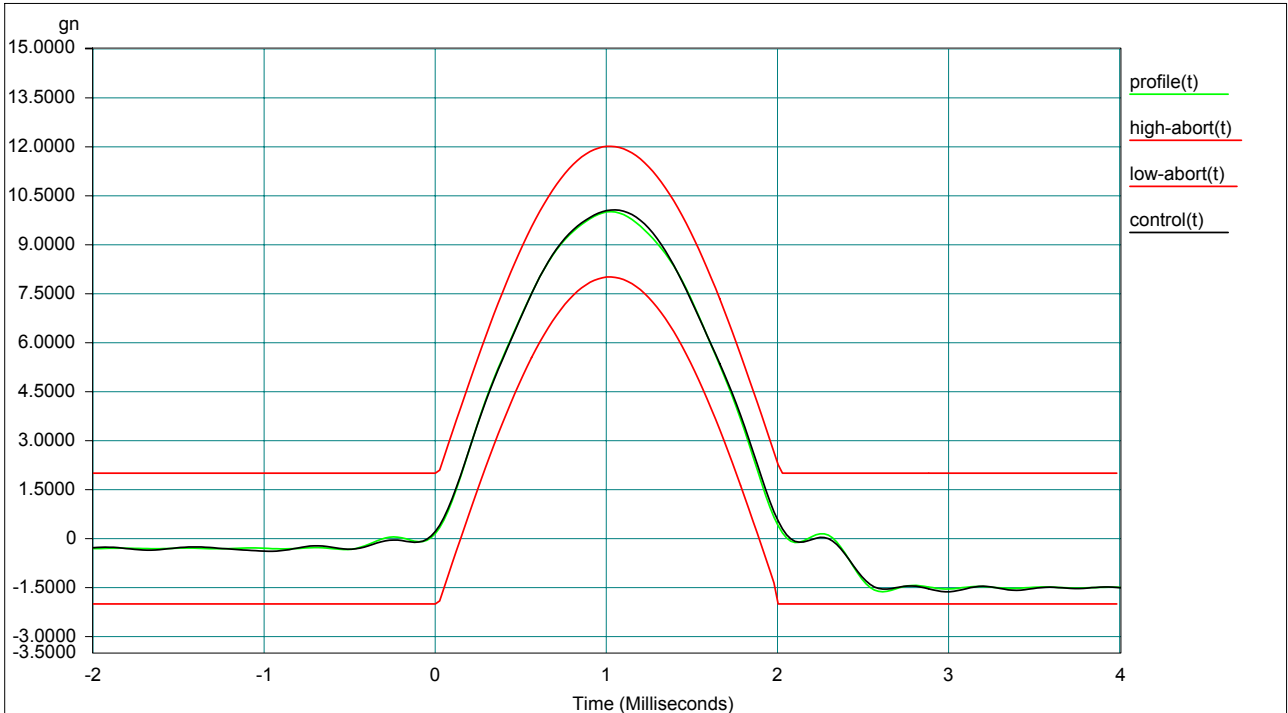


NUMBER: TWNH00011461

TEST CONDUCTED

MECHANICAL SHOCK TEST

-TEST PROFILE:  
+Z AXIS



Level:100 %	Block Size:4096
Elapsed Pulses:12	Frame Time:0.100000 Seconds
Control Peak:10.053997 gn	Control RMS:1.123213 gn
Full Level Elapsed Pulses:3	dT:0.000024 Seconds
Demand Peak:10.000000 gn	Demand RMS:1.105759 gn
Remaining Pulses:0	Pulse Type: Half Sine
Amplitude:10.000000 gn	

Data saved at 02:18:17 PM, Monday, October 20, 2008

Report created at 02:18:26 PM, Monday, October 20, 2008

\*\*\*\*\*



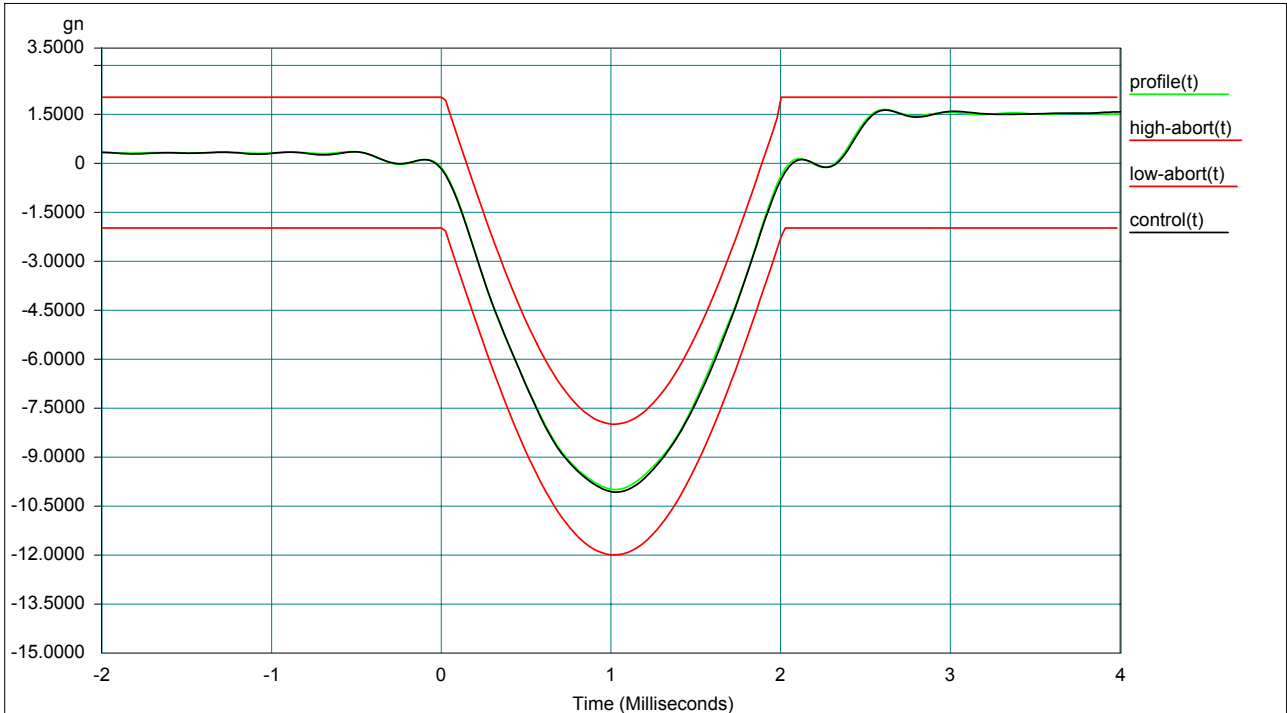


NUMBER: TWNH00011461

TEST CONDUCTED

**MECHANICAL SHOCK TEST**

-TEST PROFILE:  
-Z AXIS



Level:100 %                                  Block Size:4096  
Elapsed Pulses:13                              Frame Time:0.100000 Seconds  
Control Peak:10.079636 gn                   Control RMS:1.120238 gn  
Full Level Elapsed Pulses:3                   dT:0.000024 Seconds  
Demand Peak:10.000000 gn                   Demand RMS:1.105759 gn  
Remaining Pulses:0                            Pulse Type: Half Sine  
Amplitude: 10.000000 gn  
Data saved at 02:19:48 PM, Monday, October 20, 2008  
Report created at 02:19:48 PM, Monday, October 20, 2008

\*\*\*\*\*  
END OF REPORT